

# Confederate War Memorial Contextualization



CITY OF  
**ST AUGUSTINE**  
EST. 1565

# Contents

- National Context
- Local Context
- Conceptual Sketch + Model
- Materials + Symbolism
- Discussion
- Summary





Louisville, Kentucky



New Orleans, Louisiana



Shiloh Nat'l Military Park, Virginia



Ole Miss University Context Plaque



Indianapolis, Indiana



Shiloh Contextual Sign



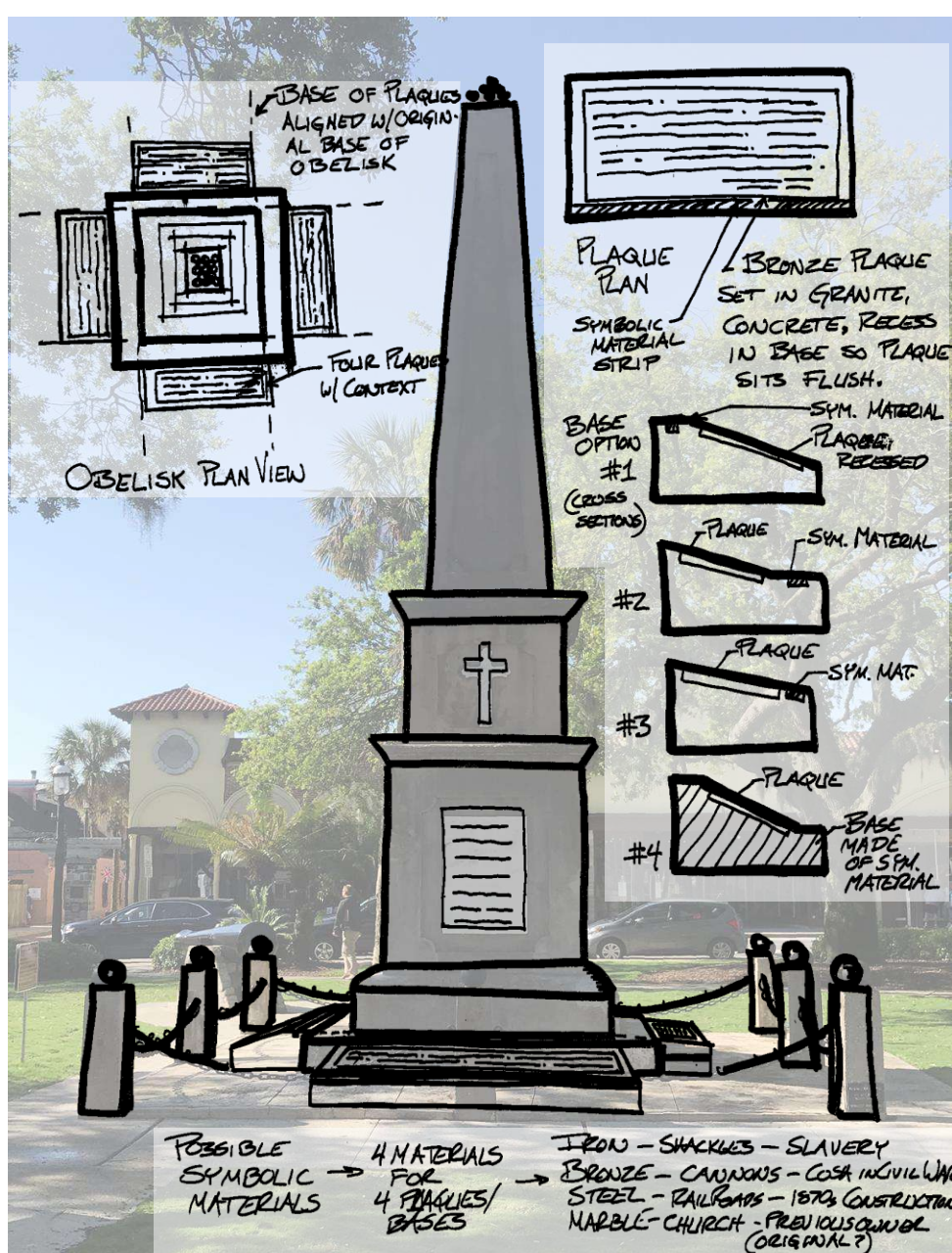


Existing Obelisk



Existing Pedestal and Surrounding Bollards and Chain

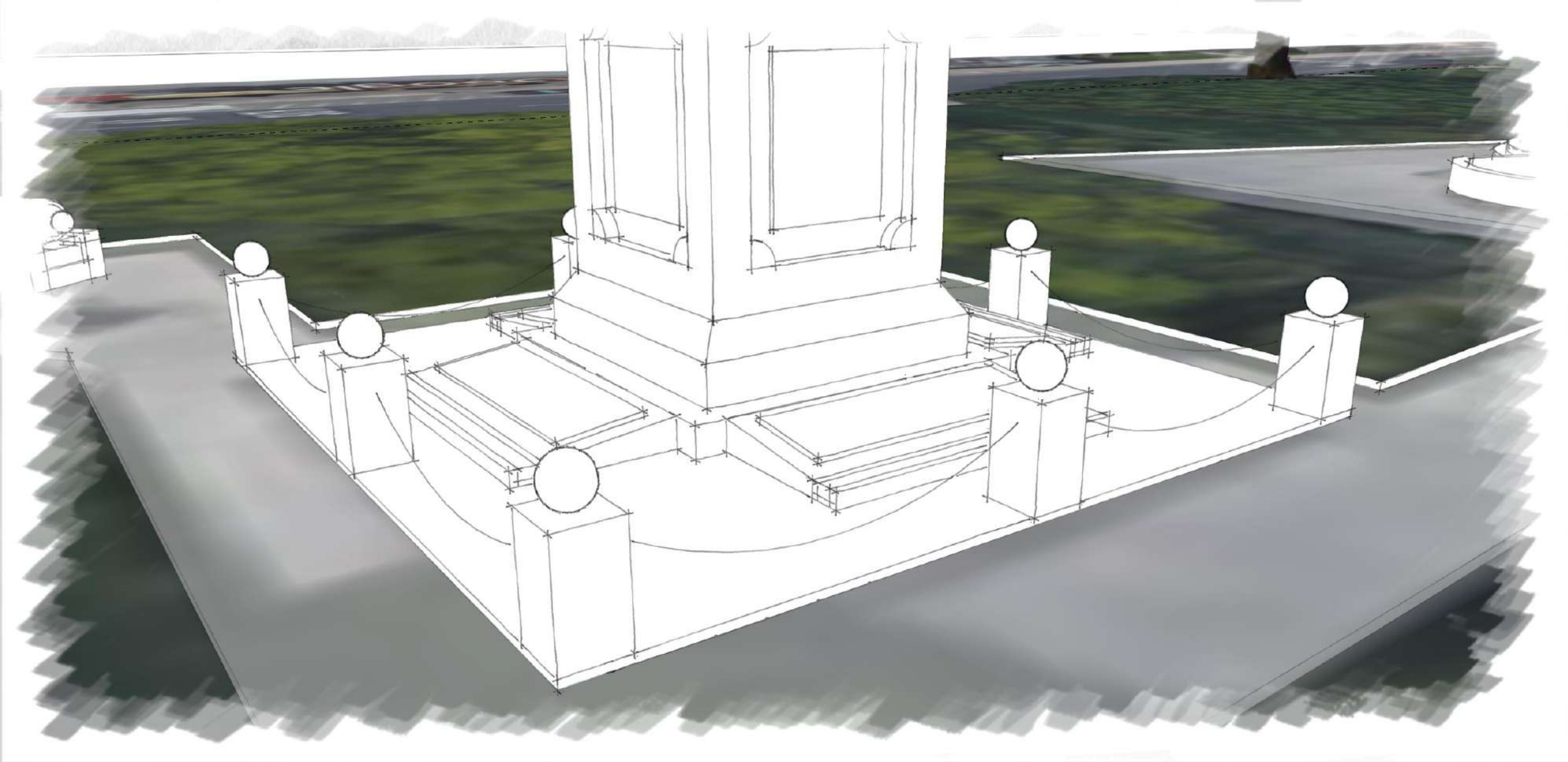




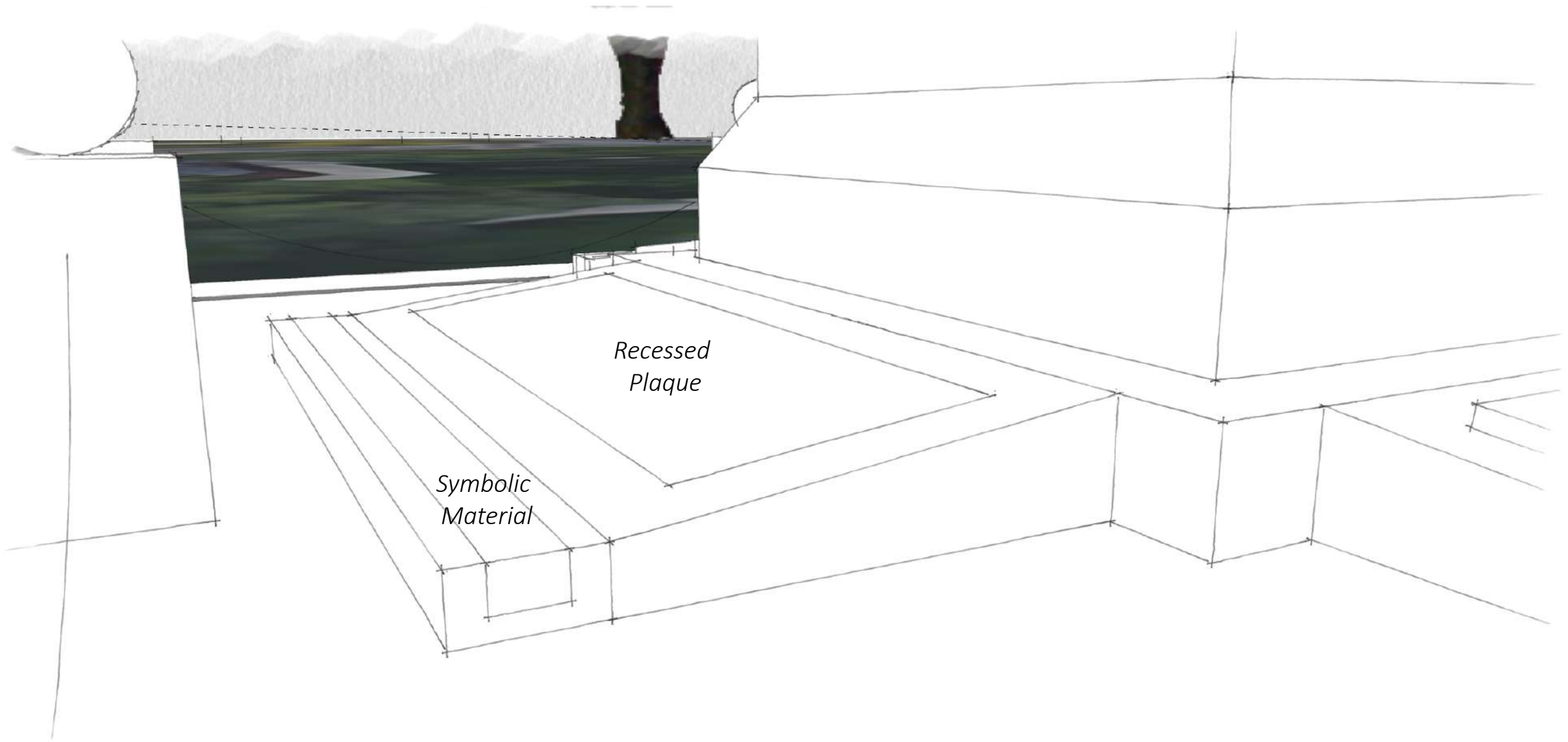
St. Augustine Confederate War Memorial  
Conceptual Sketch







St. Augustine Confederate War Memorial  
Conceptual Design Model

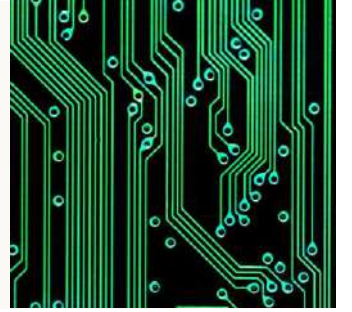


St. Augustine Confederate War Memorial  
Conceptual Design Model



## POSSIBLE SYMBOLIC MATERIALS:

Iron, Bronze, Steel, Marble, or Patterned Plexiglass



We place the plaques on concrete or monument stone (granite) bases with a goal of blending in with the current monument. Each base is embedded with symbolic material representing further context overheard during committee discussions relating to the presented narrative. Symbolic materials provide a visual and tactile connection to the text and engage the viewer's curiosity.

**Iron:** Symbolizes shackles and constraints used on slaves.

**Bronze:** Representative Civil War era cannons.

**Steel:** Symbolic of the railroad construction in the late 9<sup>th</sup> century on St. Augustine's economy and expansion.

**Marble:** Represents the church ownership of the land upon which the first memorial was built.

**Patterned Plexiglass:** A synthetic material with a computer chip pattern representing the information age and lightning spread of information contributing to the national conversation about Confederate monuments.

## DESIGN EXAMPLES:





# Questions?



CITY OF  
**ST. AUGUSTINE**  
EST. 1565