

# Cherishing Our Departed

San Lorenzo Diocesan Cemetery  
Beautification & Restoration



July 2010



San Lorenzo Diocesan Cemetery Beautification & Restoration

# Project Overview

San Lorenzo Cemetery: Established 1892.

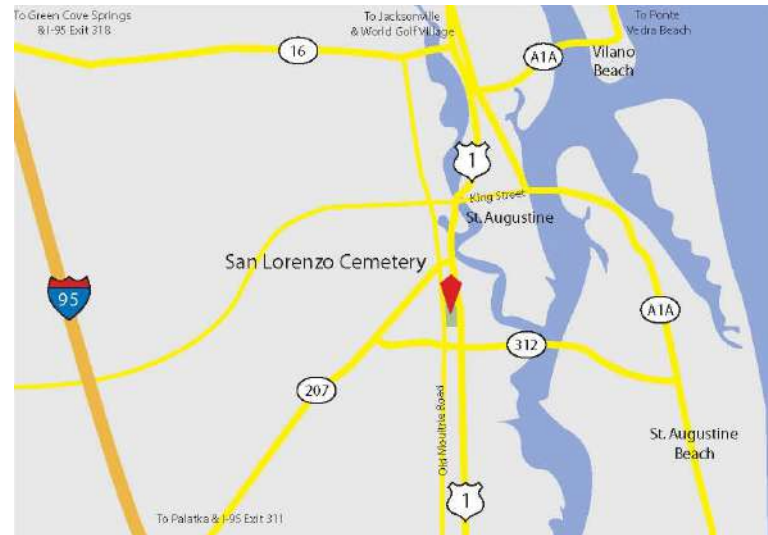
2000-2010: Development of a long-term master plan.



US-1 Entrance



Bishop's Mausoleum



Our Location, in historic St. Augustine



Conceptual design work from 2006.



San Lorenzo Diocesan Cemetery Beautification & Restoration

# Master Plan

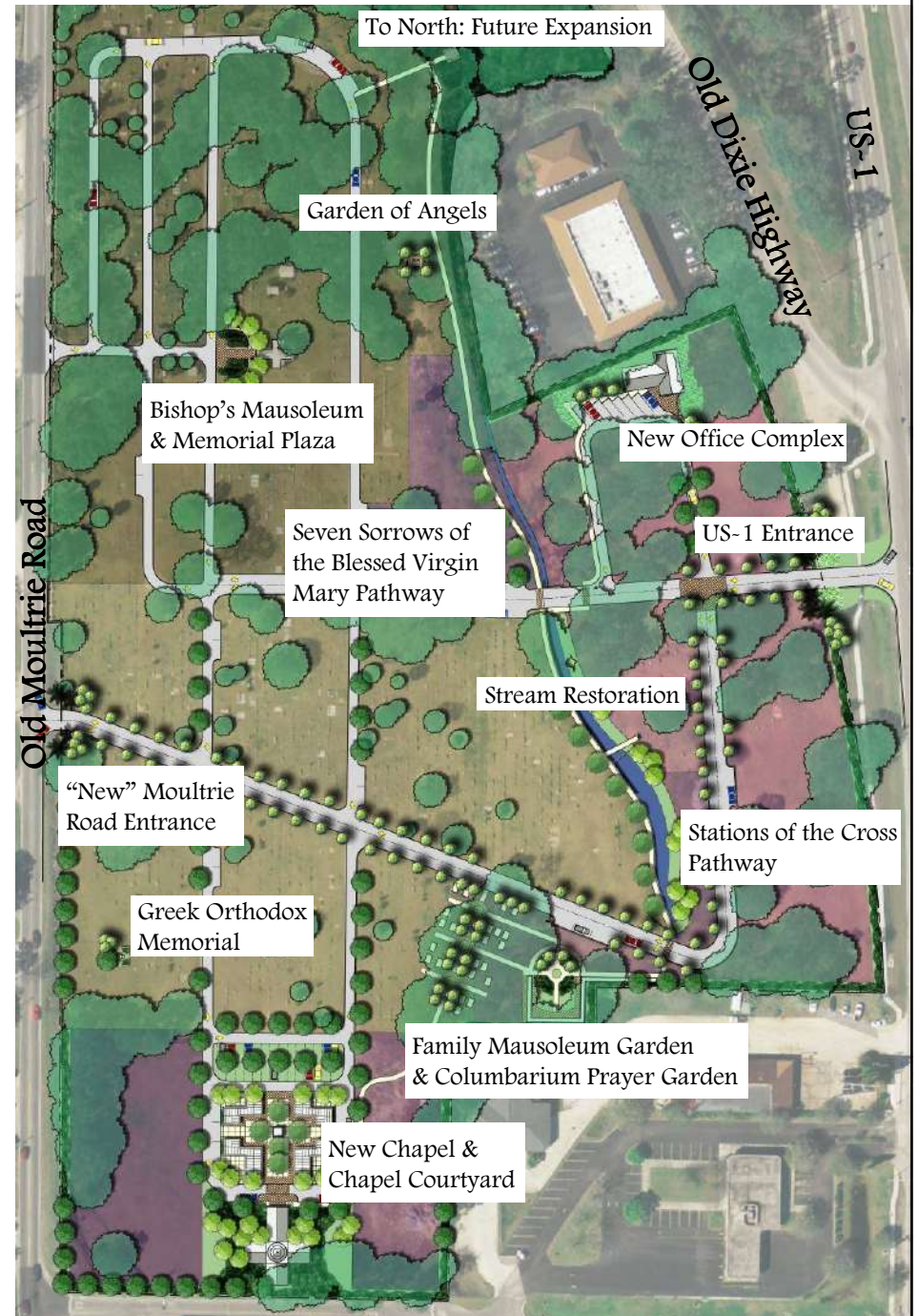
## Two Goals

1. Properly Maintain & Showcase the Historic Section
2. Better Serve Today's Diocese

## Areas of Improvement

- US-1 & "New" Moultrie Road Entrances
- Bishop's Mausoleum & Memorial Plaza
- New Chapel & Chapel Courtyard
- Stream Restoration
- Stations of the Cross & Seven Sorrows of the Blessed Virgin Mary pathways
- Family Mausoleum Garden
- Columbarium Prayer Garden
- Specialized Memorials
  - Garden of Angels
  - Greek Orthodox Memorial
- New Office Complex

Master Plan from 2008.





San Lorenzo Diocesan Cemetery Beautification & Restoration

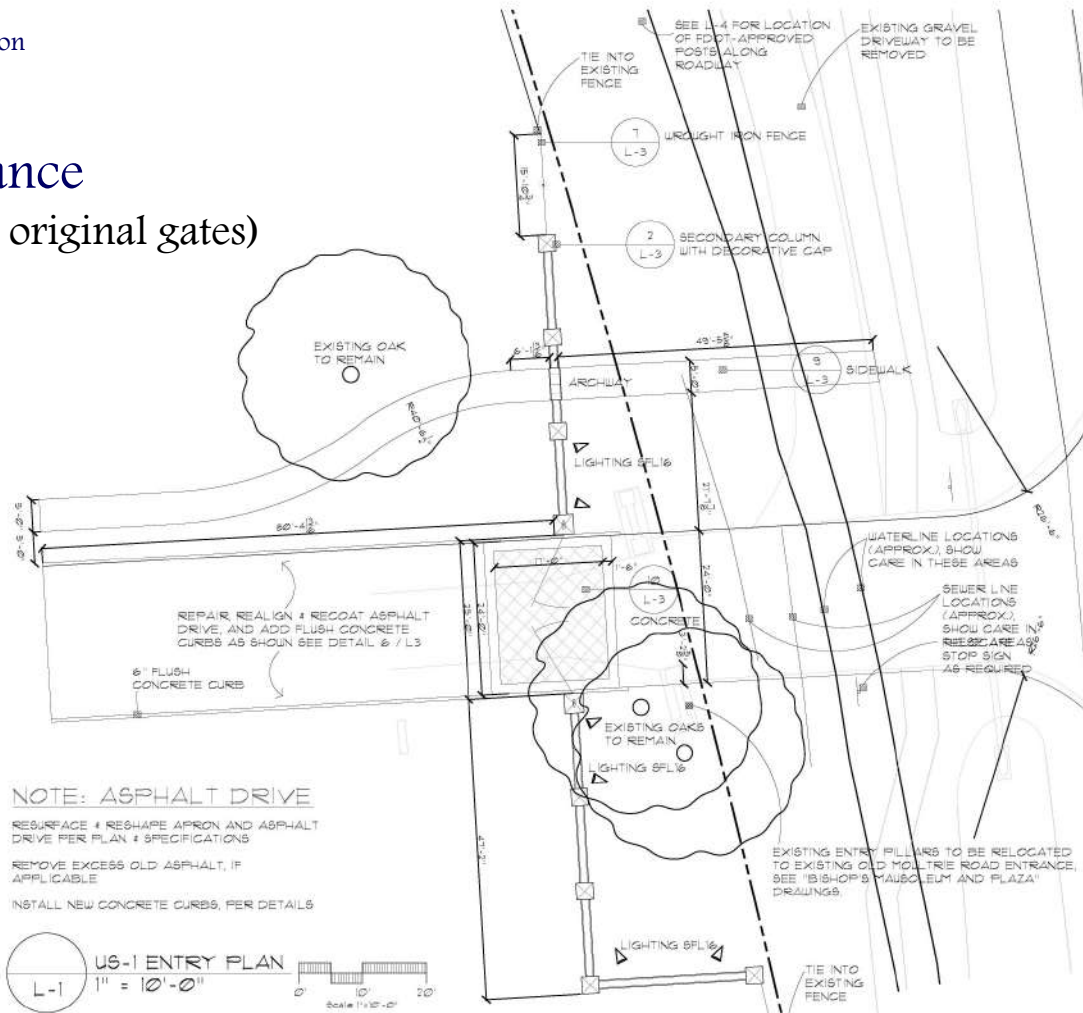
# US-1 Entrance

## & "New" Moultrie Road Entrance

- New entry gateways (based on the original gates)
- Improved visibility
- Improved curb appeal.
- Beautiful landscaping



Existing Gateway / US-1 Entrance.  
To be relocated to special events entrance for the Bishop's Mausoleum.

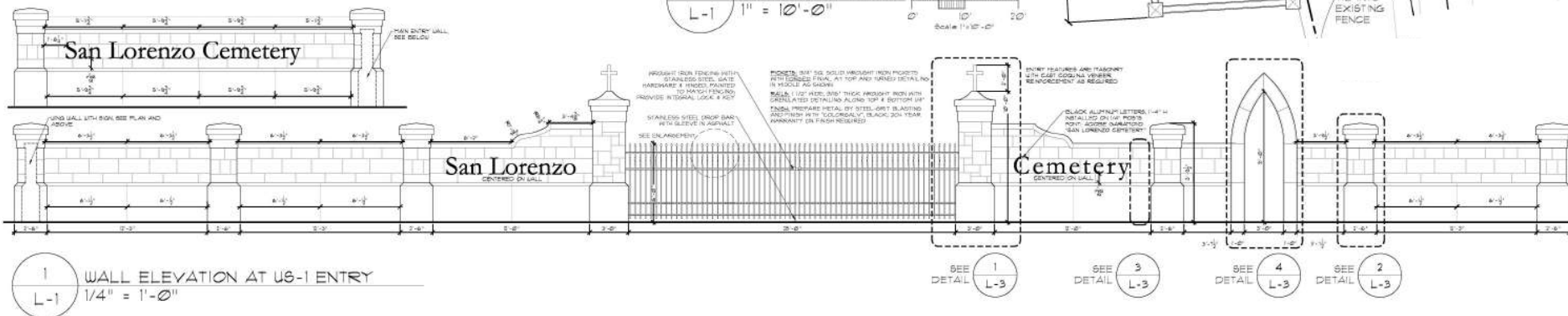


### NOTE: ASPHALT DRIVE

RESURFACE & RESHAPE APRON AND ASPHALT DRIVE PER PLAN & SPECIFICATIONS

REMOVE EXCESS OLD ASPHALT, IF APPLICABLE

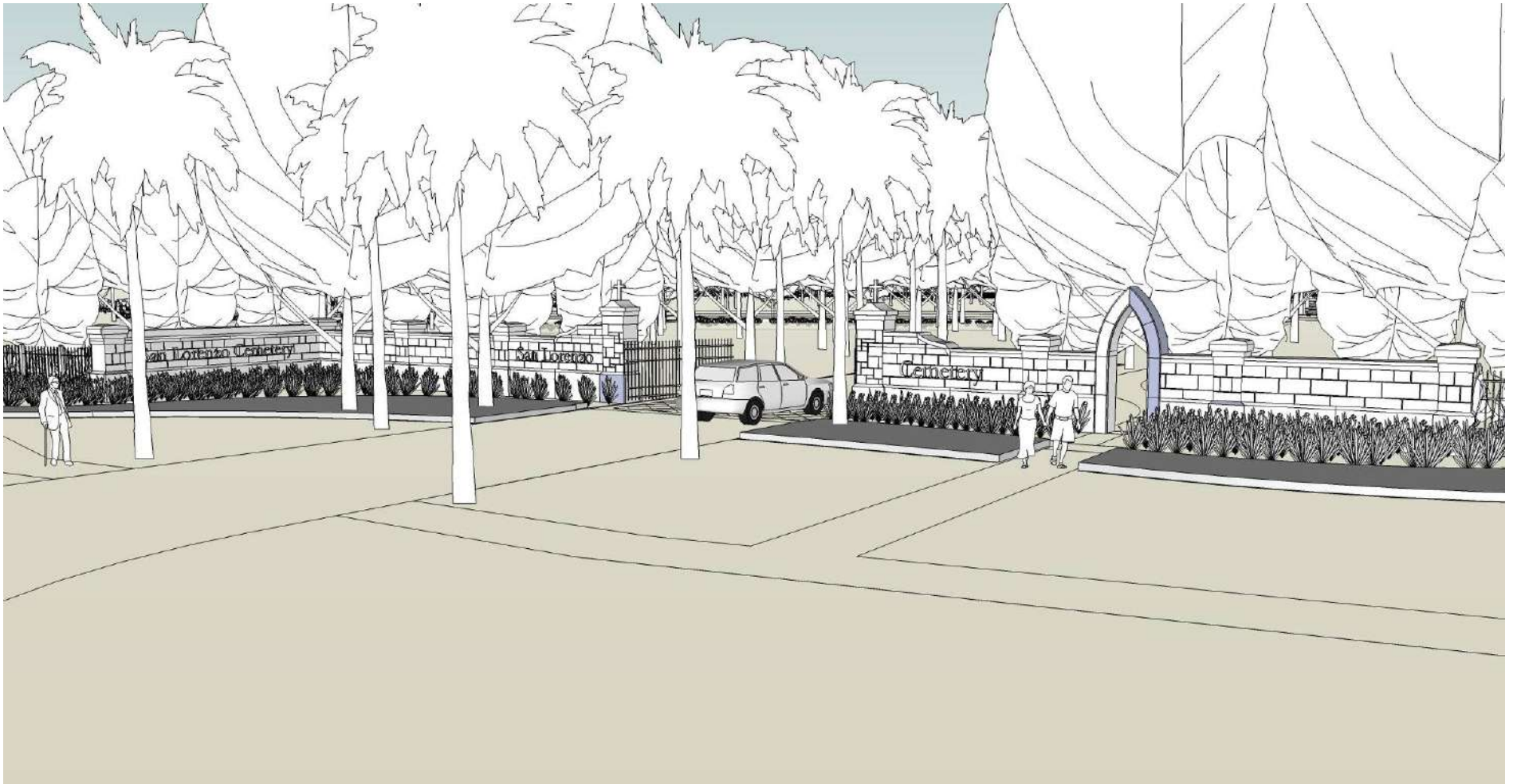
INSTALL NEW CONCRETE CURBS, PER DETAILS





San Lorenzo Diocesan Cemetery Beautification & Restoration

# US-1 Entrance



SketchUp model of US-1 entrance.



San Lorenzo Diocesan Cemetery Beautification & Restoration

# Bishop's Mausoleum & Memorial Plaza

- Fully restored exterior
- Fully restored interior
- Bishop's Memorial Plaza
- Special Events Entrance



Granite needs cleaning & repointing.



The eastern face was repaired with concrete decades ago, which is now falling apart.



Water and moisture damage inside of the mausoleum.

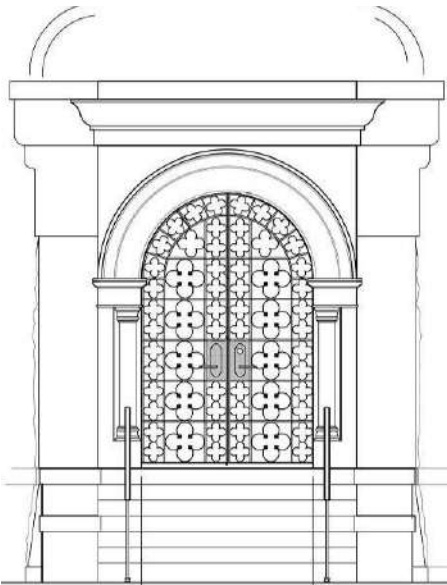


Bishop's Mausoleum. Photo taken early 2010.

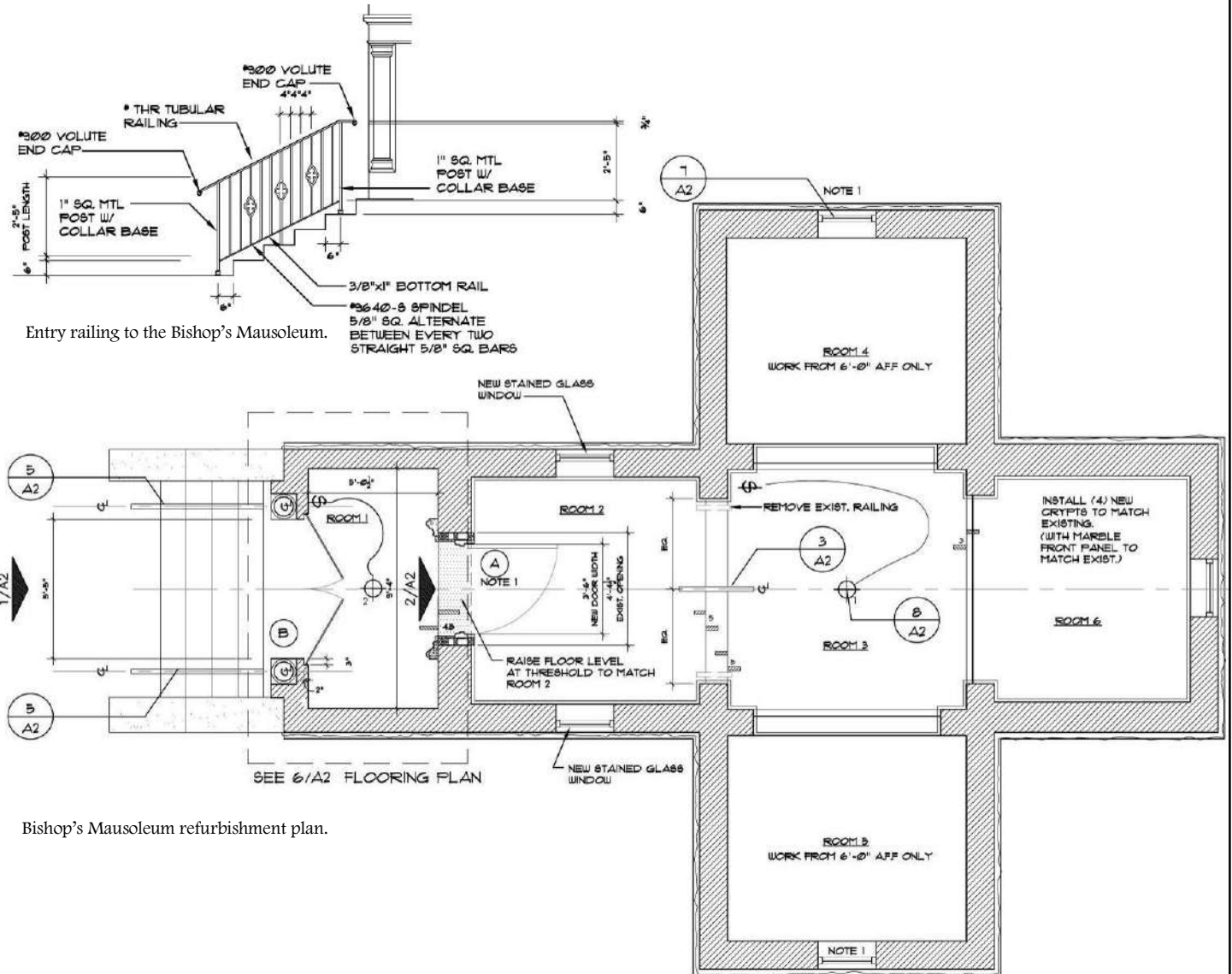


San Lorenzo Diocesan Cemetery Beautification & Restoration

# Bishop's Mausoleum & Memorial Plaza



Entrance gates to the Bishop's Mausoleum.

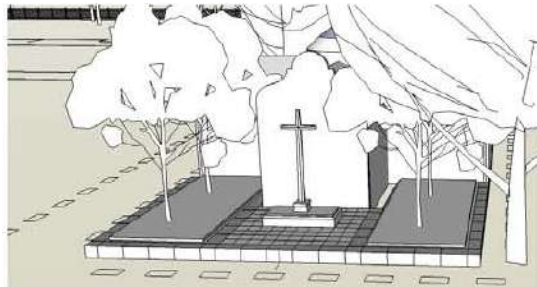
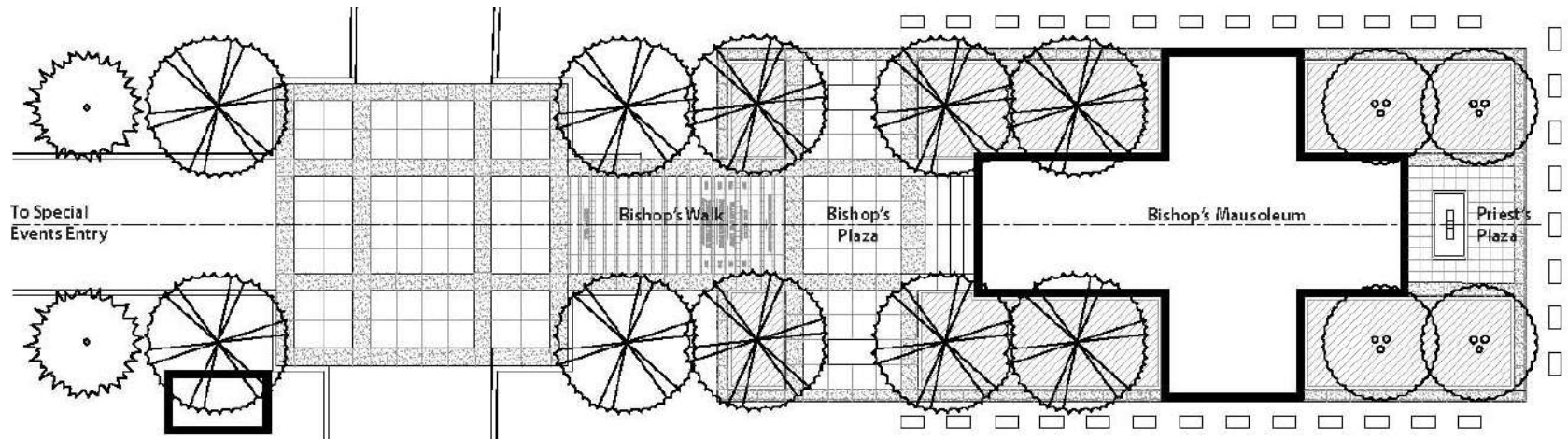


Bishop's Mausoleum refurbishment plan.

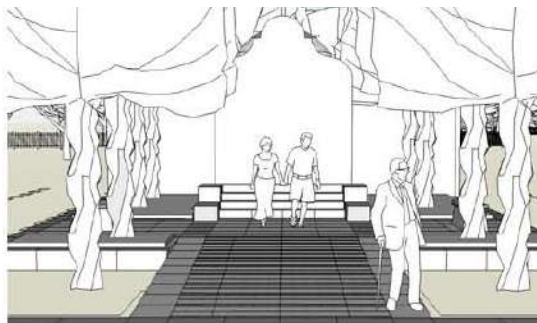


San Lorenzo Diocesan Cemetery Beautification & Restoration

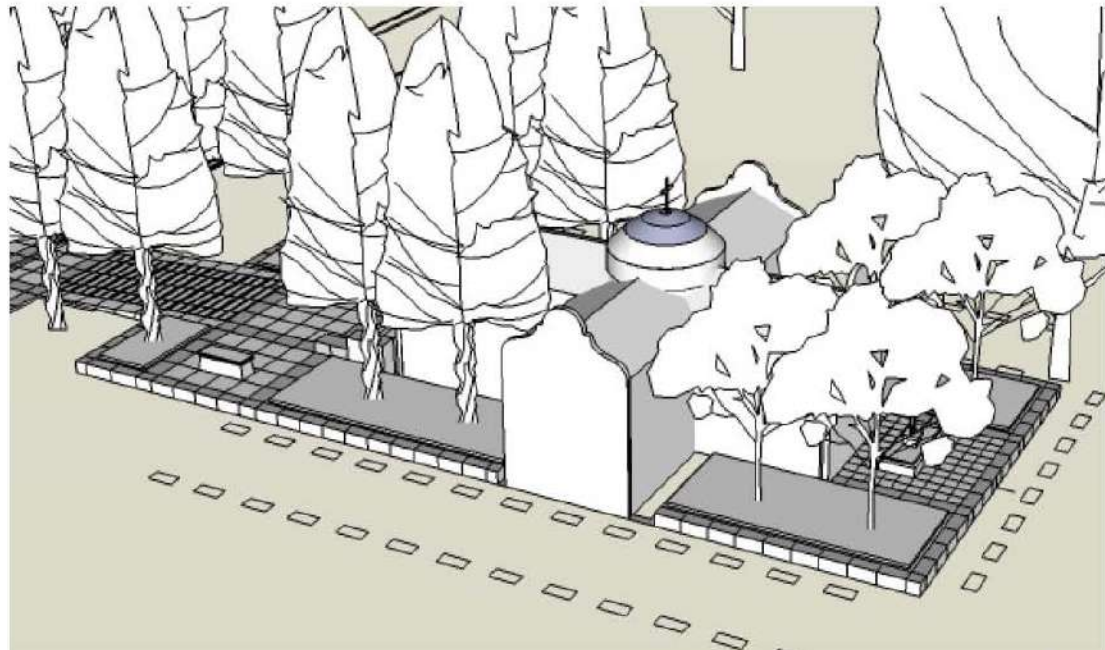
# Bishop's Mausoleum & Memorial Plaza



Priest's Plaza



Bishop's Memorial Plaza at Entrance



Bishop's Memorial Plaza





San Lorenzo Diocesan Cemetery Beautification & Restoration

# New Chapel & Chapel Courtyard

- Chapel for funerals & special events
- Courtyard
- Columbaria Niches
- Garden Crypts





San Lorenzo Diocesan Cemetery Beautification & Restoration

# New Chapel & Chapel Courtyard



New Chapel & Chapel Courtyard



San Lorenzo Diocesan Cemetery Beautification & Restoration

# New Chapel & Chapel Courtyard



Columbaria Niches (left), Chapel Courtyard and Chapel (center), Garden Crypts (right)

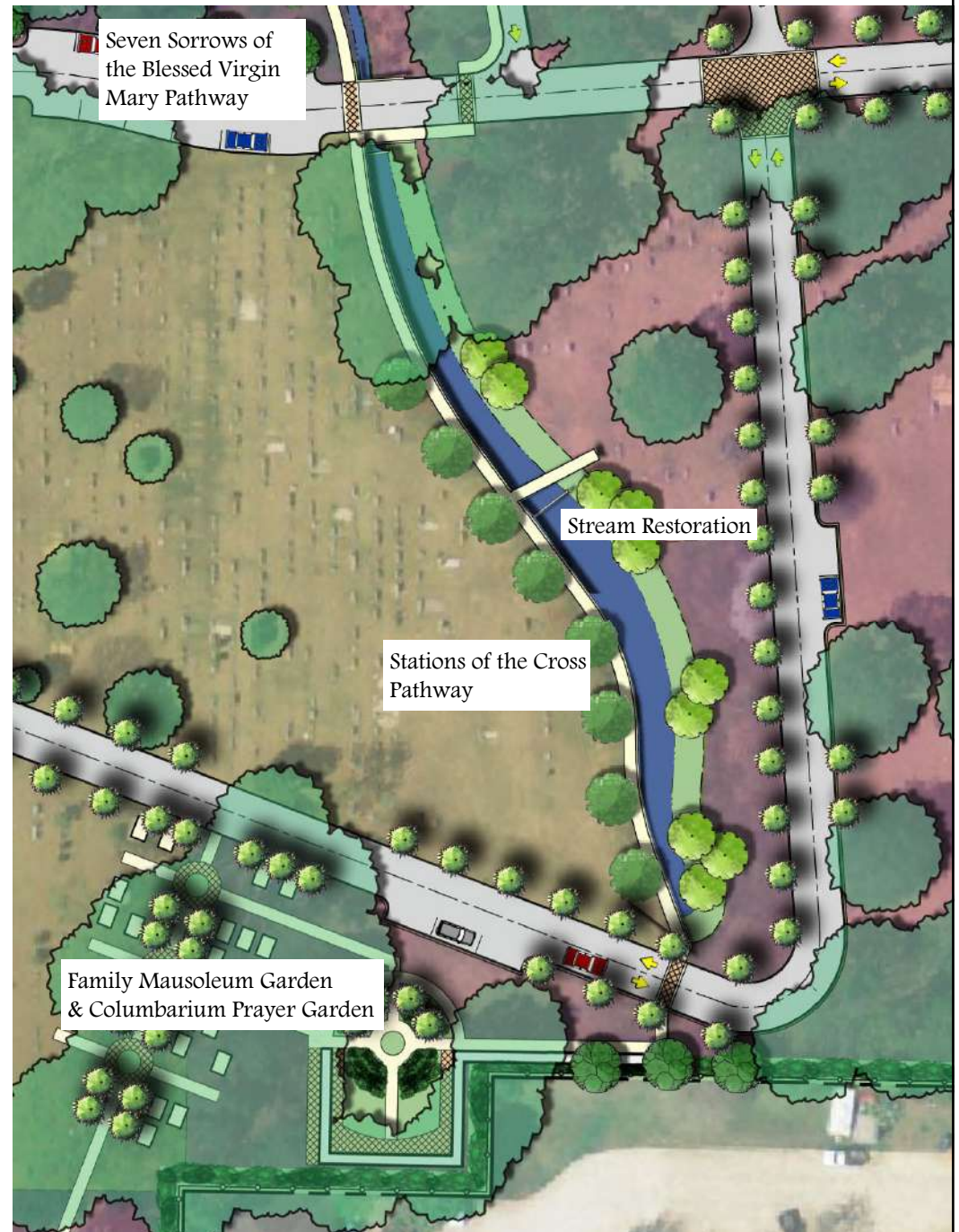


San Lorenzo Diocesan Cemetery Beautification & Restoration

# Stream Restoration

## & Stations of the Cross / Seven Sorrows of the Blessed Virgin Mary Pathways

- Natural stream settings
- Stations of the Cross pathway  
(Entry road to Chapel)
- Seven Sorrows of the Blessed  
Virgin Mary pathway  
(Entry road to historic section)





San Lorenzo Diocesan Cemetery Beautification & Restoration

# Stream Restoration

& Stations of the Cross / Seven Sorrows of the Blessed Virgin Mary Pathways



Restored stream with landscaping and Stations of the Cross pathway.  
The columbarium prayer garden and family mausoleums are in the background.



San Lorenzo Diocesan Cemetery Beautification & Restoration

# Family Mausoleum Garden & Columbarium Prayer Garden

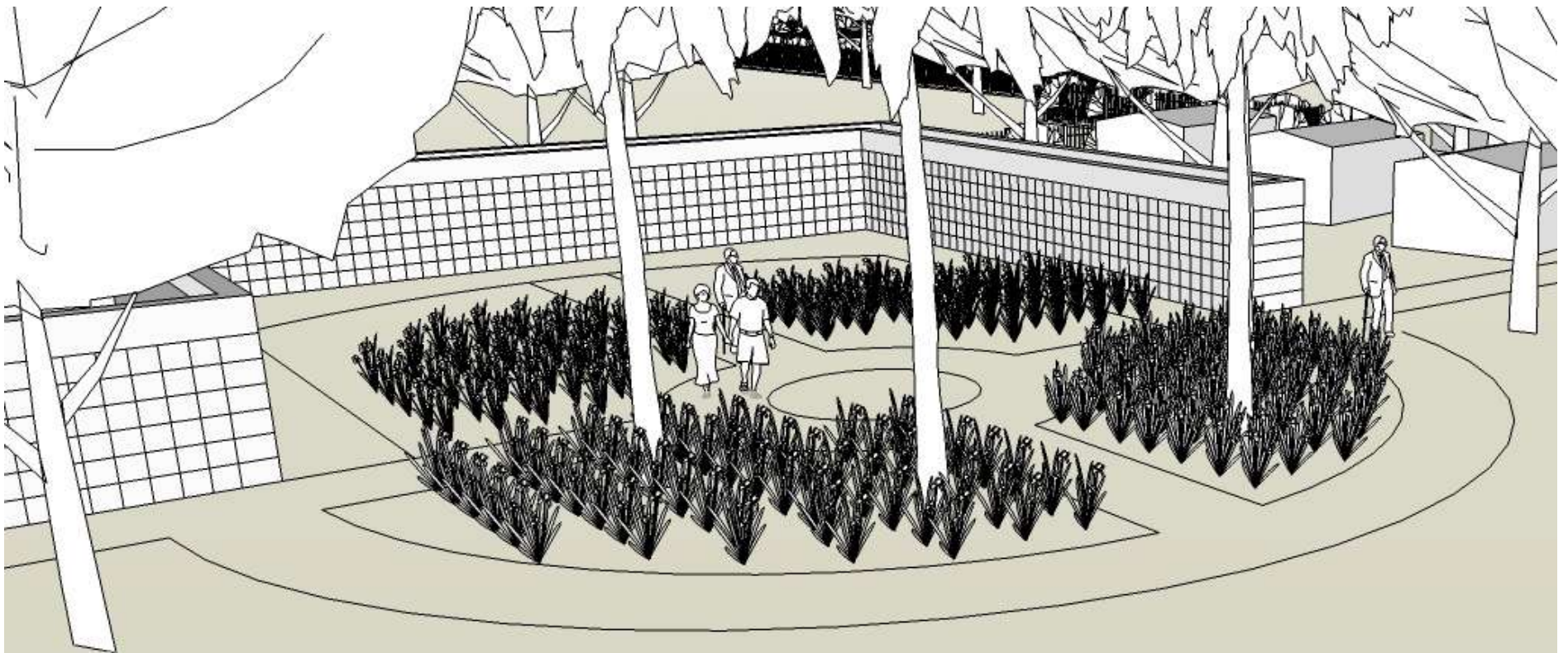
- Central park in the Family Mausoleum area
- Columbarium wall
- Private prayer garden
- Stations of the Cross pathway





San Lorenzo Diocesan Cemetery Beautification & Restoration

# Family Mausoleum Garden & Columbarium Prayer Garden



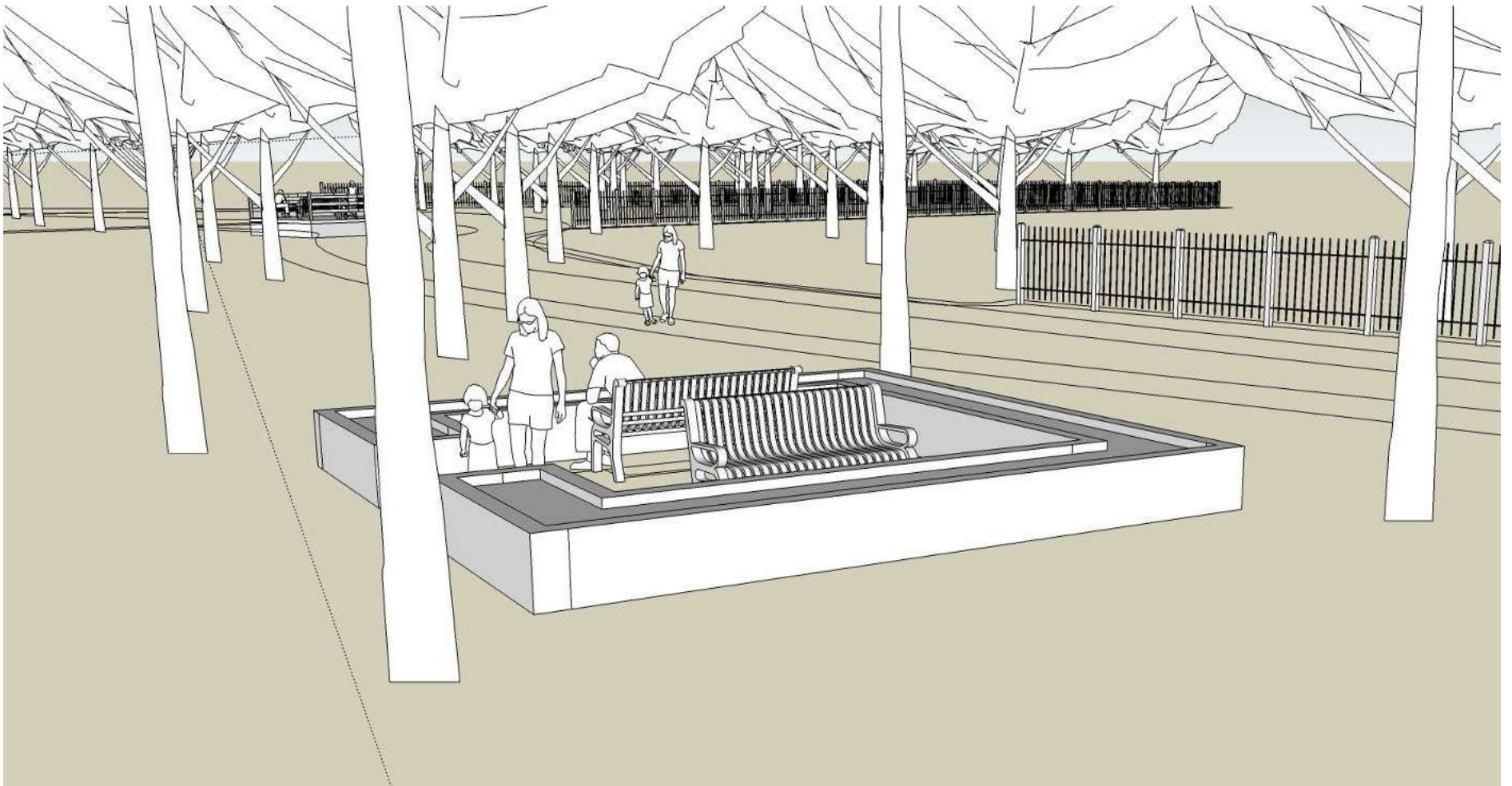
SketchUp model of Columbarium Prayer Garden



San Lorenzo Diocesan Cemetery Beautification & Restoration

# Special Memorials

## Garden of Angels, Greek Orthodox Memorial & Others



SketchUp model for the conceptual Garden of Angels



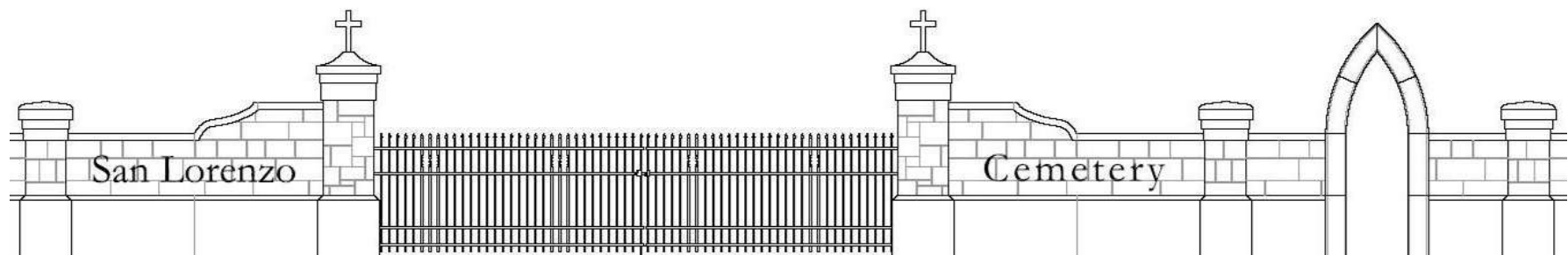


San Lorenzo Diocesan Cemetery Beautification & Restoration

# Timelines & Estimates

<i>Years</i>	<i>Project</i>	<i>Estimated Cost*</i>
2010-2012	US-1 Entrance	\$ 95,000
	Columbarium Prayer Garden	\$ 300,000
	Family Mausoleum Garden	\$ 50,000
2013-2015	Bishop's Mausoleum Restoration	\$ 1,500,000
	Bishop's Memorial Plaza	\$ 400,000
	Stream (with Stations of the Cross & Seven Sorrows pathways)	\$ 250,000
2016-2020	New Chapel	\$ 1,000,000
	Chapel Courtyard	\$ 400,000
	New Moultrie Road Entrance	\$ 150,000
Additional Items	Garden of Angels	\$ 10,000
	Greek Orthodox Memorial	\$ 7,500
	Infrastructure (Roadway, Fencing, Irrigation)	\$ 900,000
	Office Complex	\$ 400,000

\* Estimates based on probable costs in 2009. These are forward looking statements, and the elements of the project and the costs may change. These are estimates only.



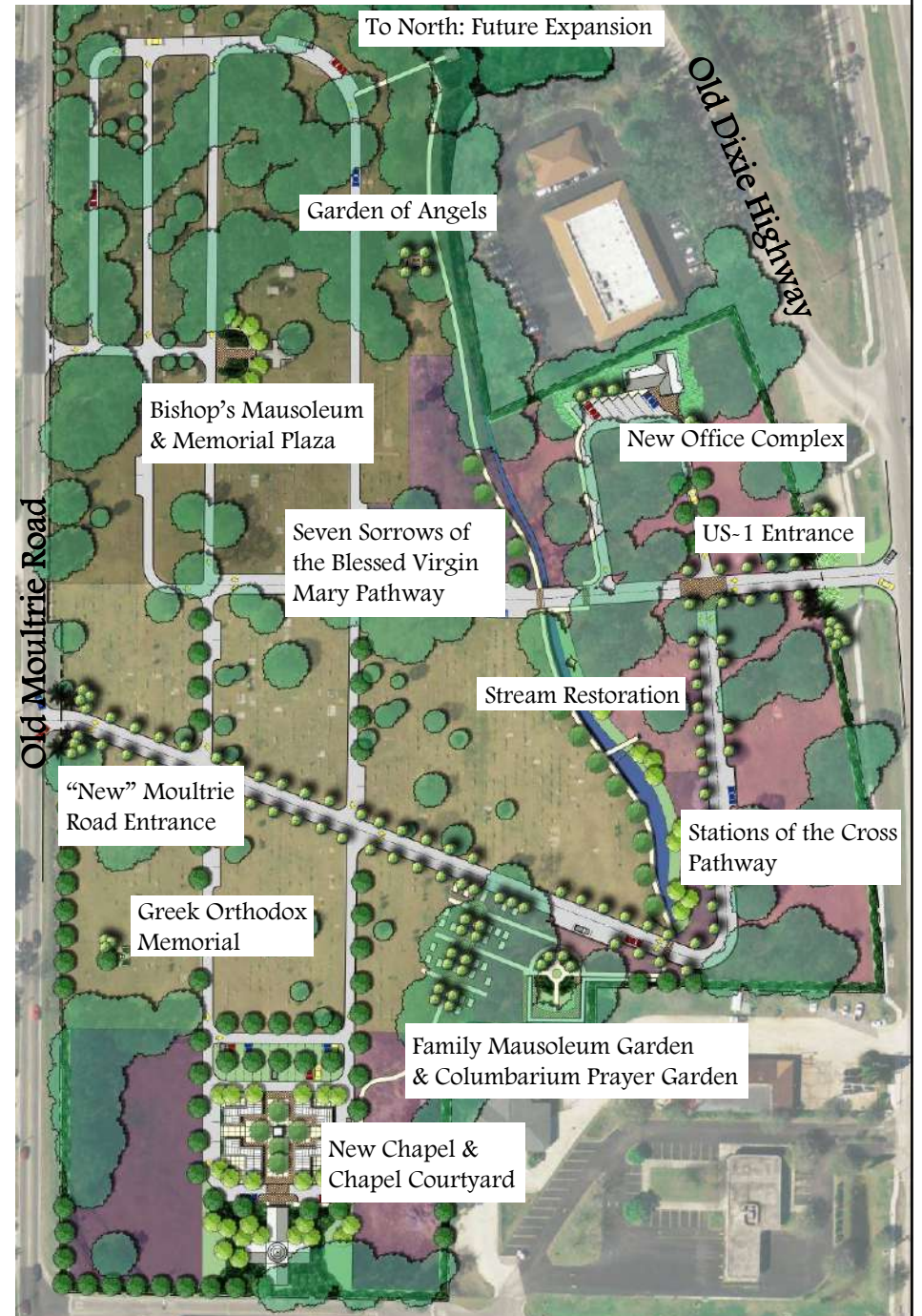


San Lorenzo Diocesan Cemetery Beautification & Restoration

# How *You* Can Help

- 1) Pray
- 2) Find Out More Information
- 3) Choose San Lorenzo Cemetery for you and your family
- 4) Donate to the improvements
- 5) Let others know

Master Plan from 2008.



# Questions?

Rev. Timothy Lindenfesler, J.C.L.  
Catholic Center  
11625 Old St. Augustine Road  
Jacksonville, Florida 32258  
Ph: 904.262.3200 ext 103  
tlindenfesler@dosaf1.com

