



DONOR OPPORTUNITIES

The St. Augustine Art Association is proud of the strong community support that has built the organization over the years.

You can become part of this legacy.

Donors will be recognized on the Art Garden Donor Wall and through these featured naming and tribute opportunities:

- North Sculpture Rain Garden
- South Sculpture Rain Garden
- Inspiration Water Garden
- Exploration Plaza
- Loggia Galleria
- Old Town Landing

To show your support, please contact:

The St. Augustine Art Association
22 Marine Street
St. Augustine, FL 32084
(904) 824-2310

elysebrady@staaa.org

Learn more:
www.staaa.org
www.touchstaugustine.com



BRaille TRAIL BEGINS HERE!

TOUCH St. Augustine is a community outreach initiative developed by the St. Augustine Art Association to enhance accessibility of the visual arts in St. Augustine, Florida with Braille markers and audio guides.

CREATION ■ INSPIRATION ■ EXPLORATION

ART GARDEN

For nearly a century, the St. Augustine Art Association has been a landmark for creation, inspiration and exploration in the nation's oldest city.

The new Art Garden will continue this legacy for the next generation by providing a beautiful and inviting outdoor gallery space that engages all of the senses and celebrates the arts.

"Nothing is more completely the child of art than a garden."

~Sir Walter Scott



DOORWAYS TO CREATIVITY





1 Creation

Marine Street Entrance + Sculpture Gardens

The most striking feature of the Art Garden will be two 'floating' sculptures, seemingly suspended in the rain gardens flanking the front elevation. Three inviting entry points welcome the community via stairs and ADA accessible pathways.

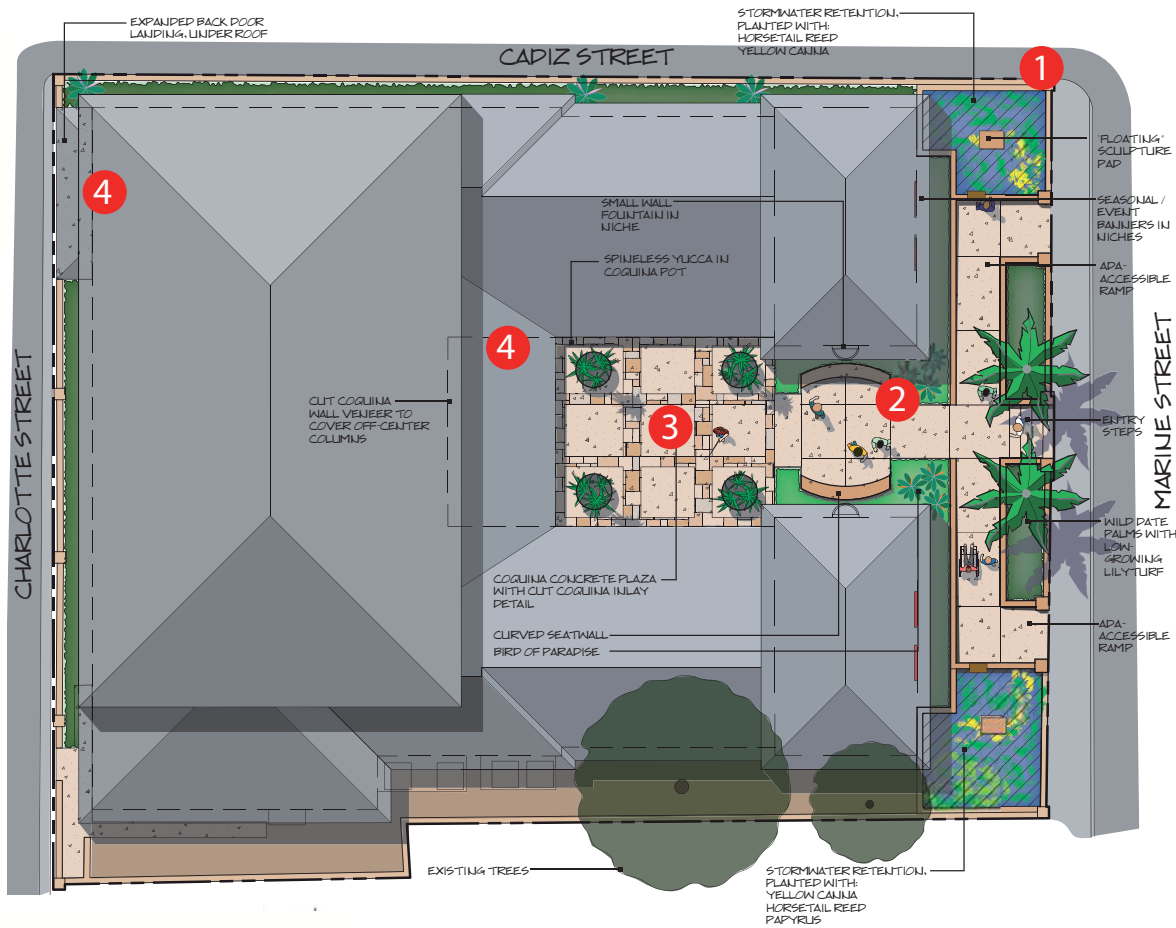
Two wild date palms frame the main axis of the garden, which features Braille interpretive panels for the two sculptures as well as seasonal event banners.

2 Inspiration

Seating Area + Fountains

As guests proceed between colorful Bird of Paradise plantings, two wall fountains and curved built-in benches offer a quiet space for inspiration and reflection.

This area will also function as an outdoor foyer for events that may occur in the Art Garden.



3 Exploration

Central Courtyard Plaza

The central courtyard is designed to visually connect the interior and exterior galleries. Cut coquina bands pull the architecture into the ground plane.

Four large planters, modeled after the "Old Spanish Trail" marker and containing tropical greenery, are placed at the perimeter, representing the four corners of the globe.

4 Doorways to Creativity

Loggia Galleria

Within the covered breezeway of the front entry, cut coquina wraps the arched columns and spans the entire width of the wall, creating a dramatic, yet intimate outdoor exhibition space.

Old Town Landing

At the Charlotte Street entrance, an expanded coquina-clad covered landing with enhanced exhibition signage attracts pedestrian traffic from the Aviles Street District.

Through each of these doorways, the elegant gallery space opens up for all to experience the joy of art.

